



*Distant Fields*

**AQEEL SOLANGI**

16 NOVEMBER, 2021

5 — 8 PM

Continues till 1 December, 2021



GALLERY



Aqeel Solangi was born in Ranipur, Sindh. He graduated with honours from the prestigious National College of Arts, Lahore in 2003 with a major in Painting, followed by his first Masters degree MA (Hons.) Visual Art in 2005. He received his second Masters degree MA Fine Art (pass with merit) from the Bath School of Art and Design - Bath Spa University, UK in 2016. He was the recipient of the renowned international Charles Wallace Pakistan Trust Visiting Artist Fellowship for the Prince's School of Traditional Arts, London in 2006. Since then, he has been teaching at the National College of Arts, Rawalpindi as an Assistant Professor in the Department of Fine Arts. Solangi's work has been showcased in Pakistan and internationally. He was part of the 2013 Pakistani Artists' workshop in China.

Solangi has received 'A Vision of the Future-2006' Young Artists Award by the Lahore Arts Council in 2006. Major survey of his work was exhibited at the Chawkandi Art in 2019, that was accompanied the publication 'Fictional Homelands'. His work has been reviewed by Dr. Michele Whiting, Dr. Akbar Naqvi, Aasim Akhtar, Marjorie Hussain, Nafisa Rizvi, Salwat Ali, Noor Jehan Mecklai and Sally Bennett. He has worked as sign and cinema board painter at Mehboob Painters in Khairpur (Mir's), and also attended extensive art courses at an early stage of his career at renowned artist Mussarat Mirza's studio in Sukkur, Sindh. Aqeel Solangi lives and works in Rawalpindi, since 2007 he is promoting art through art education at the Studio Aqeel Solangi.

Distant Fields is the 9th solo exhibition in my oeuvre and among them 5th solo exhibition with the KOEL Gallery. The exhibition comprises a selection of my Art practice produced in the past 3 years between 2019-2021. Literature somehow gives me a conceptual drive to create my visuals. It sets the plot for my works. Through this stance I find that the work is already staged before its creation. It's like a storyteller retelling the story and from a painter's perspective reimagining the picture in visual vocabulary, this way I am connected with the oral, written and visual tradition of the artistic sensibilities. Most of the works in the exhibition have some sort of layer of South Asian Literature, whether its poetry or literary prose, for instance, clouds have come from Kavi Kalidasa & Meghaduta which means cloud messenger and butterflies (Titliyan) and fireflies (Jugnoo) that are used as an emblem of childhood by many poets, I painted them on Takhti (wooden tablet) that augment the idea of cherishing my childhood memories.

I used to write takhti in my primary school as it was an essential practice in schools to write on Takhti (wooden tablet). The repetition of flowers in the Fasl e Gul series, in my opinion, is like the repetition of letters that I used to write in my childhood. It was sort of a ritual to write a takhti everyday and clean and coat it with Multani Matti, like a mandala or rangoli ritual is being performed everyday and dismantled everyday. The repetition of writing the same letters was to get perfection over the alphabet/language, but besides that I think there is a spiritual side to it, we use to recite and repeat verses everyday without realizing its repetition for our spiritual gain.

Aqeel Solangi





*Chandol*, 2021, Acrylic on canvas, 30 x 40 cm / 11 x 15 in



*An Anonymous Night*, 2017-21, Acrylic and oil on canvas, 50x 66cm /20x26 in





*An Uncertain Night*, 2020, Acrylic on canvas, 27 x 27 cm / 11 x 11 in



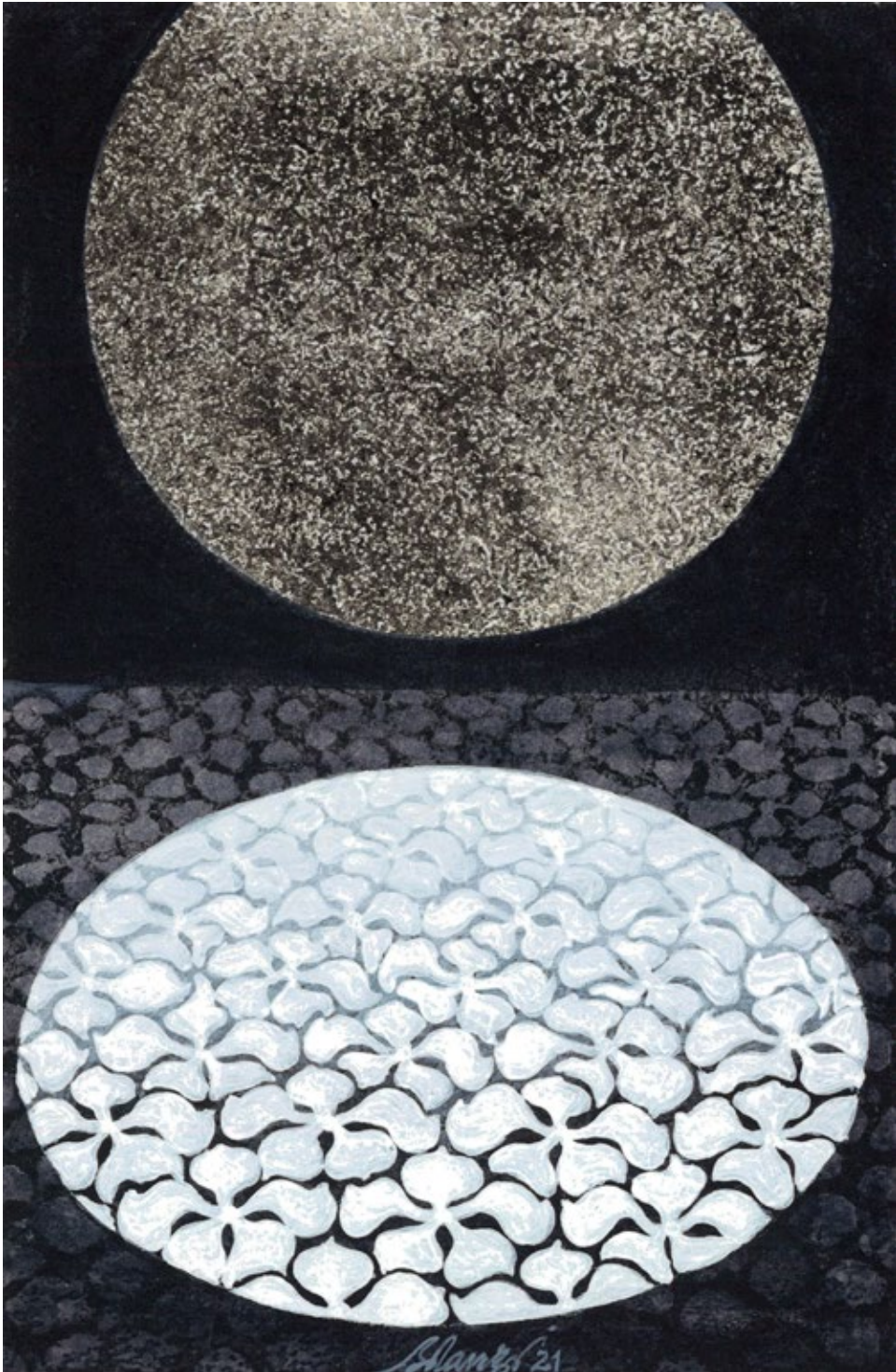
*The Drifting Light*, 2021, Acrylic on paper, 12 ½ x 15 ½ cm - 5 x 6 in



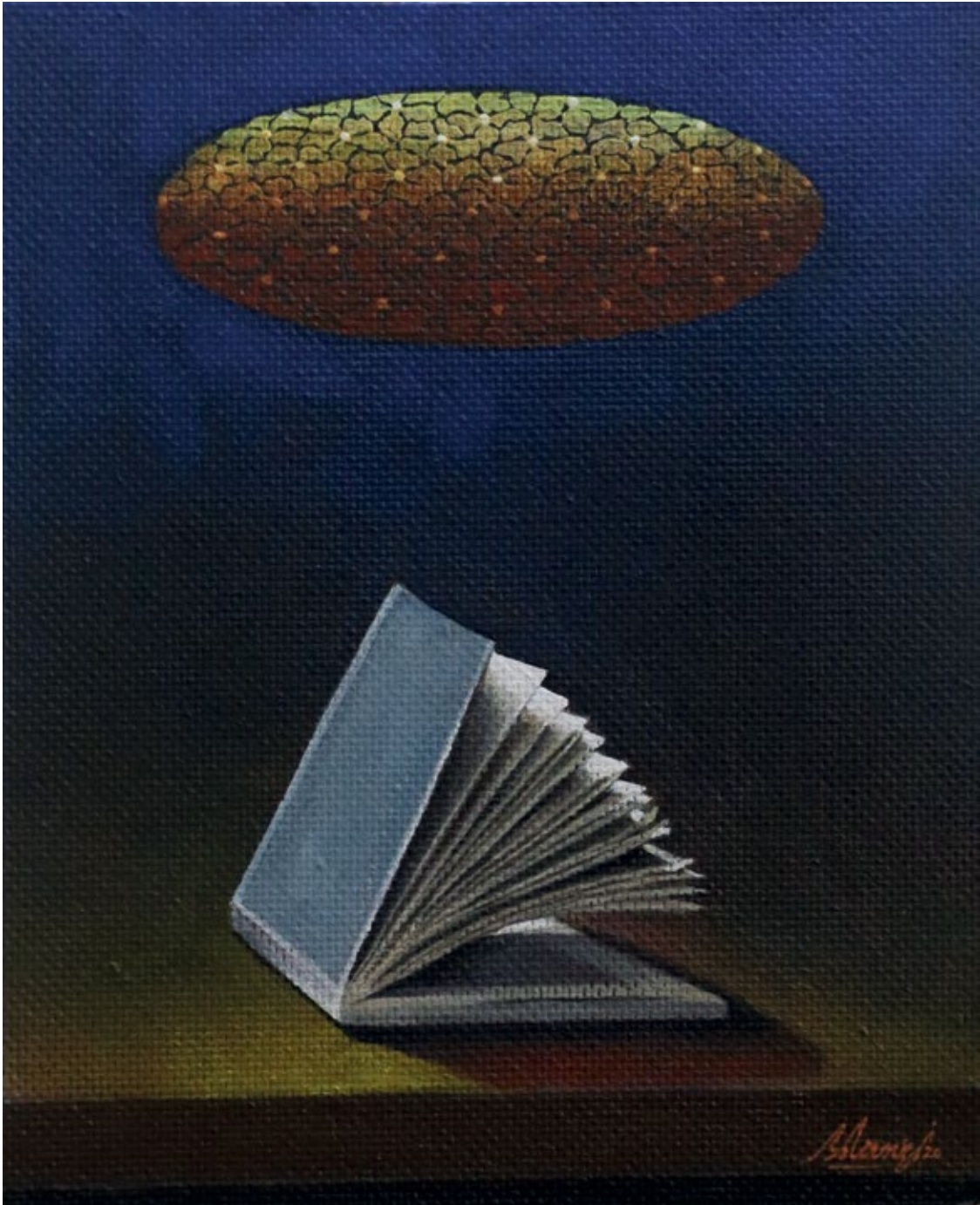


*The Moonrise IV*, 2021, Colored pencils, graphite and woodcut embossing on paper, 10 x 15.25 cm / 4 x 6 in



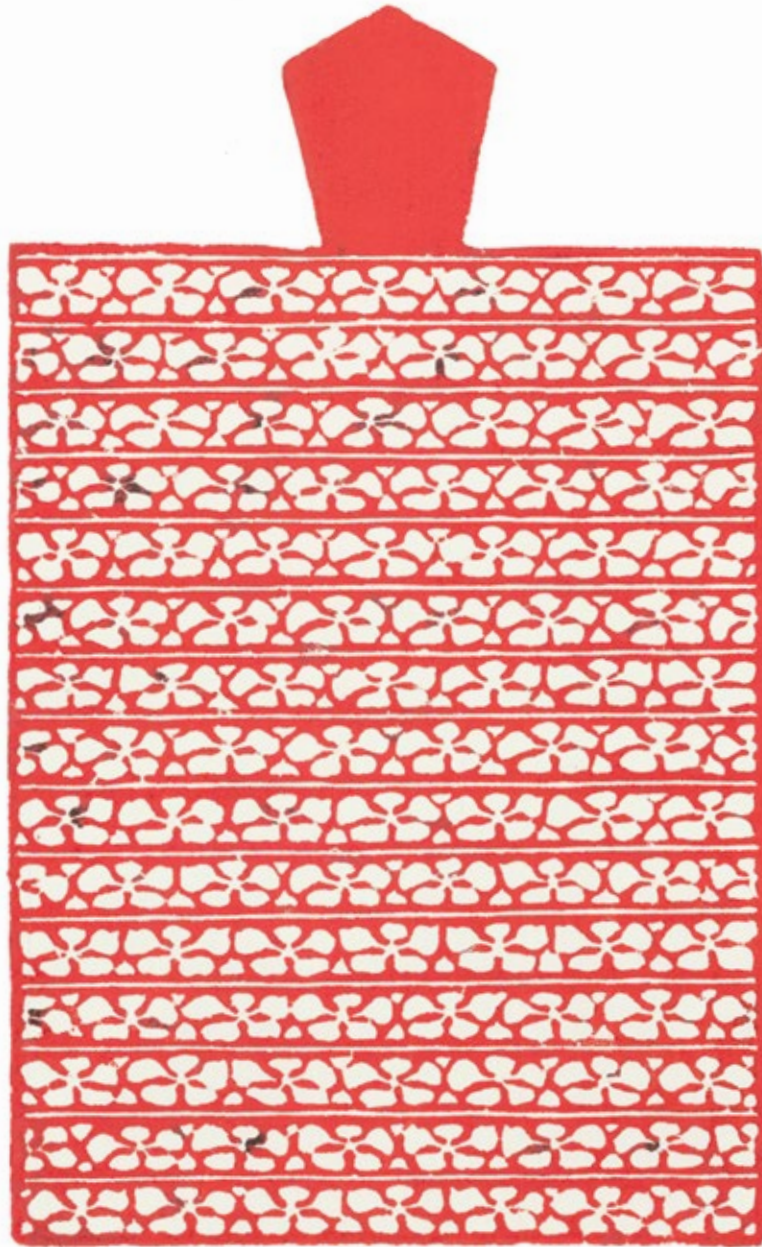


*The Moonrise*, 2021, Acrylic on paper, 10 x 15 ¼ cm - 4 x 6 in

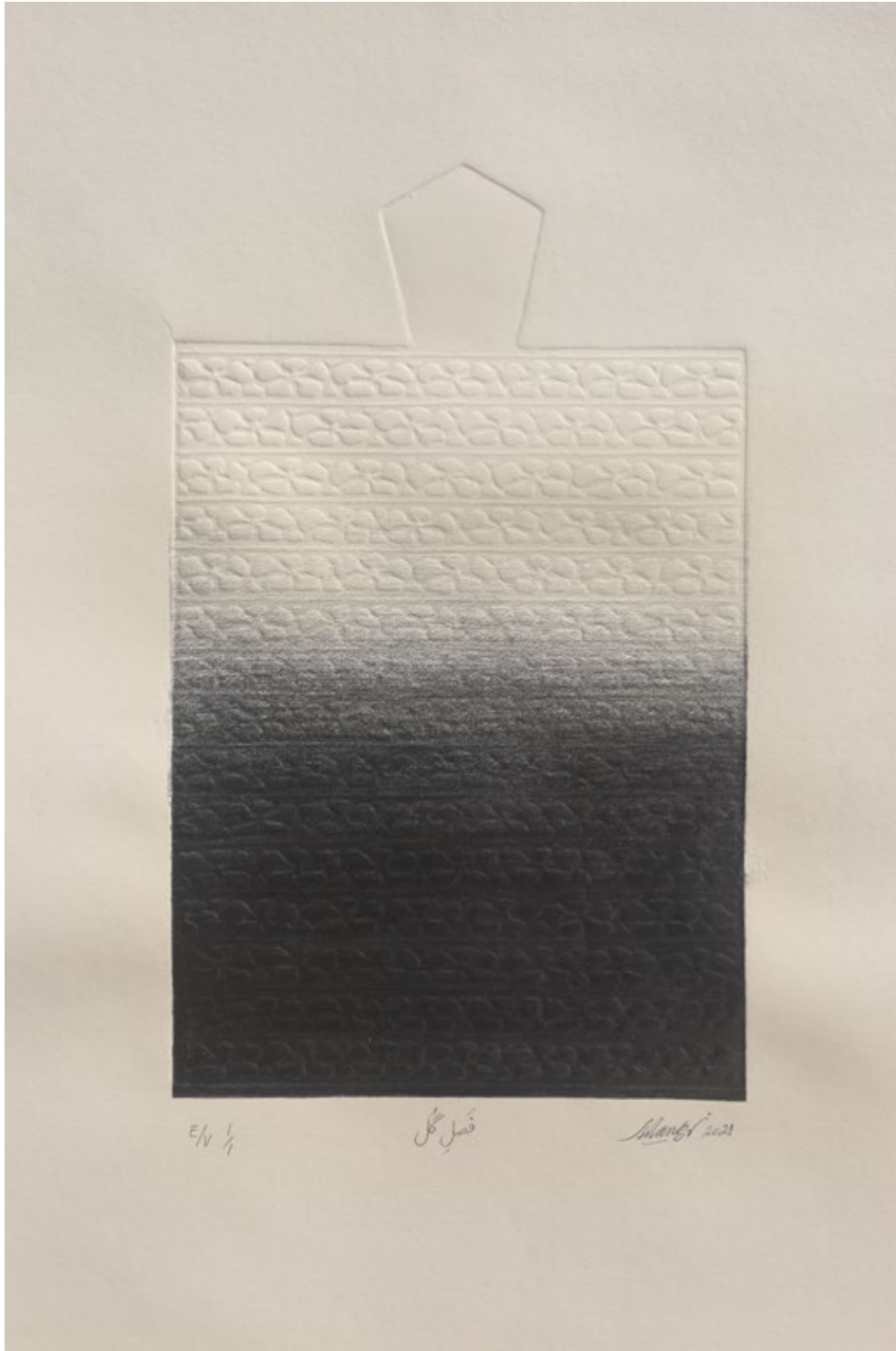


*The Half-Opened Book*, 2020, Acrylic on board, 23.5 x 19.7 cm / 7.5 x 9.25 in



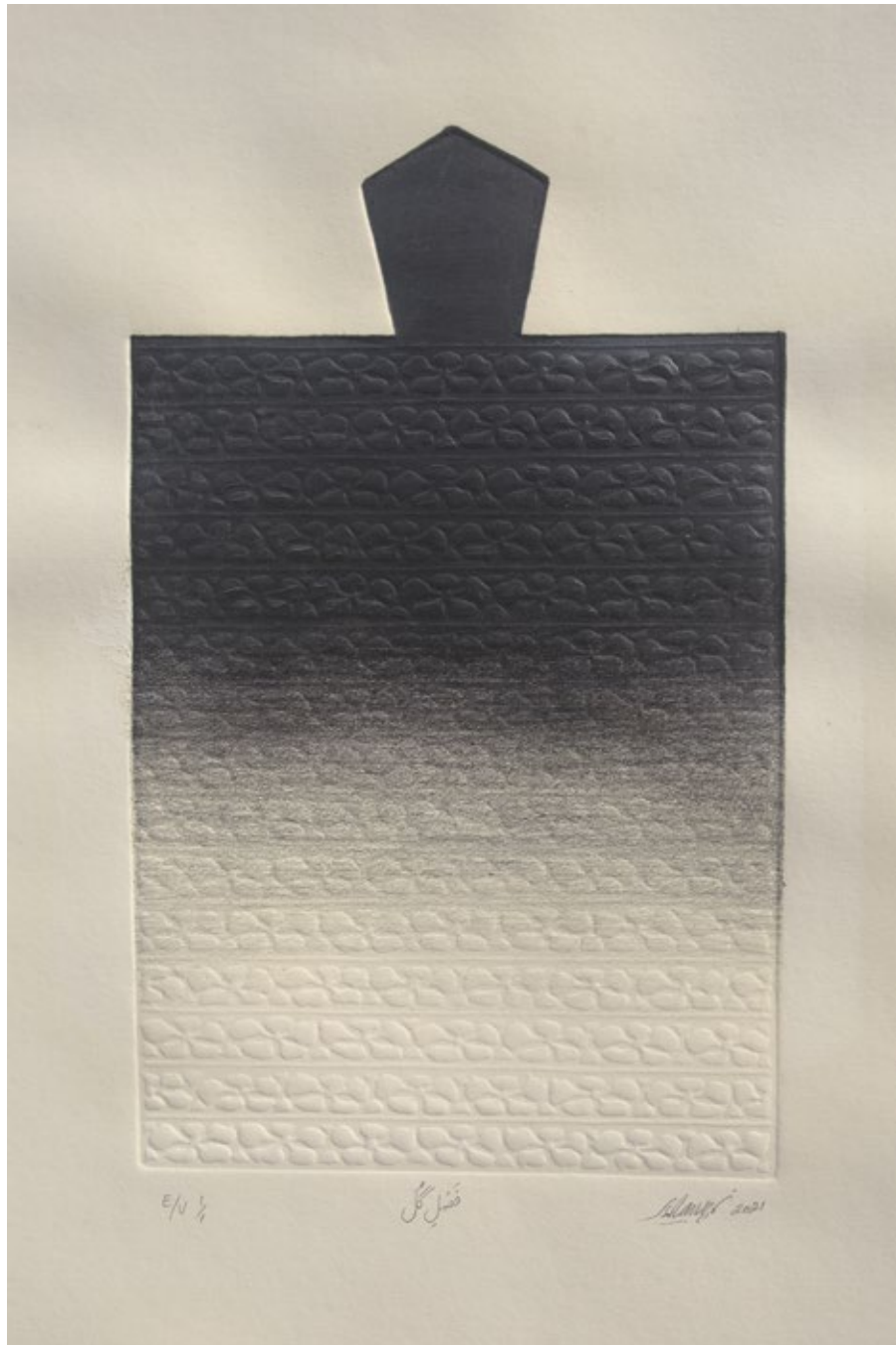


*Fasl e Gul, (Season of Flowers), 2021 Edition length: 1/2, 2021, Woodcut, 35.5 x 56 cm / 14 x 22 in*



*Fasl e Gul, (Season of Flowers)*, 2021, Edition length: EV 1/1, 2021, Woodcut Embossed and graphite on paper, 35.5 x 56 cm / 14 x 22 in





*Fasl e Gul, (Season of Flowers)*, 2021, Edition length: EV 1/1, 2021, Woodcut Embossed and graphite on paper, 35.5 x 56 cm / 14 x 22 in



*Fasl e Gul, (Season of Flowers)*, 2021, Edition length: 1/16, 2021, Woodcut Embossed on paper,  
35.5 x 56 cm / 14 x 22 in

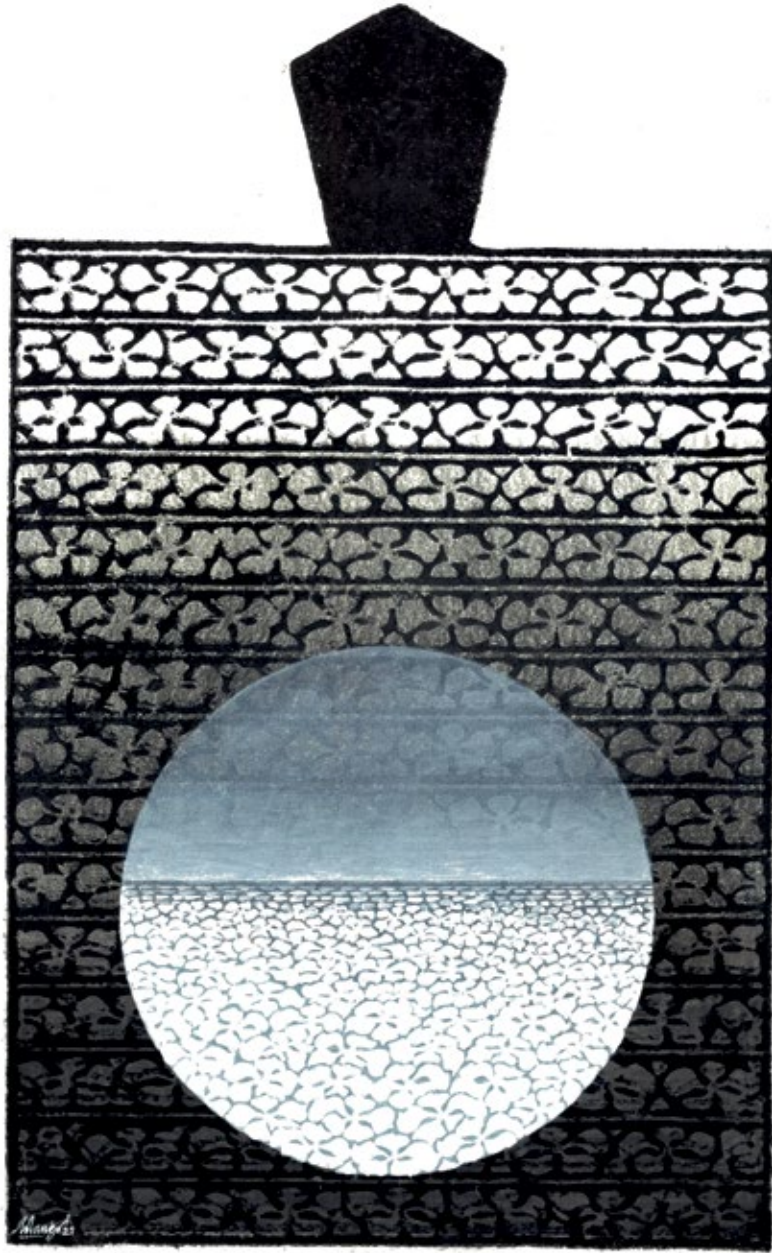




*Titliyon Ka Des*, 2021, Acrylic on Takhti (wooden tablet), 19 x 32.5 cm \_ / 7.5 x 12.75 in



*Jugnuon Ka Des*, 2021, Acrylic on Takhti (wooden tablet), 19 x 32.5 cm / 7.5 x 12.75 in



*The Bright Night*, 2021, Acrylic and graphite on woodcut ground, 20.25 x 33 cm / 8 x 13 in

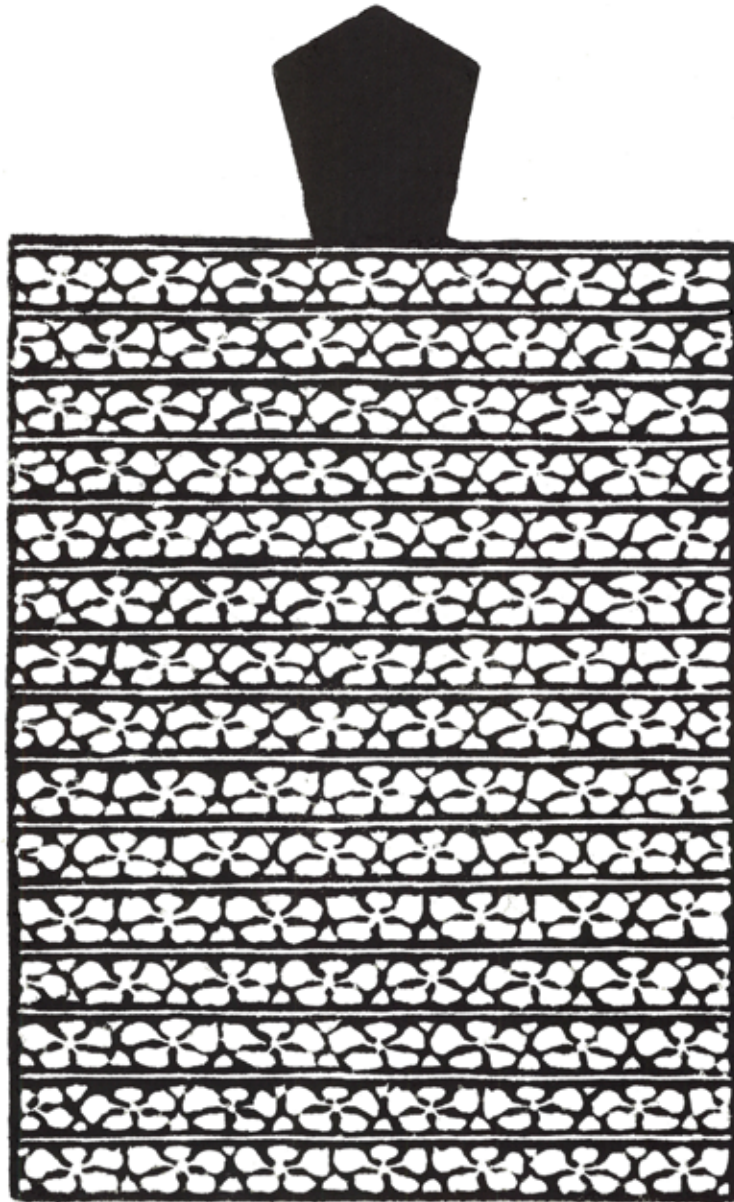




*The Whispering Cloud*, 2021, Acrylic and graphite on woodcut embossed on paper,  
20.25 x 33.5 cm / 8 x 13.25 in



*Fasl e Gul, (Season of Flowers)*, 2021, (EV 1/1), Woodcut Embossed and graphite on paper  
Image size: 20 ¼ x 33 cm - 8 x 13 in, Paper size: 35 ½ x 54 cm - 14 x 21 ¼ in



1/4

فصل گل

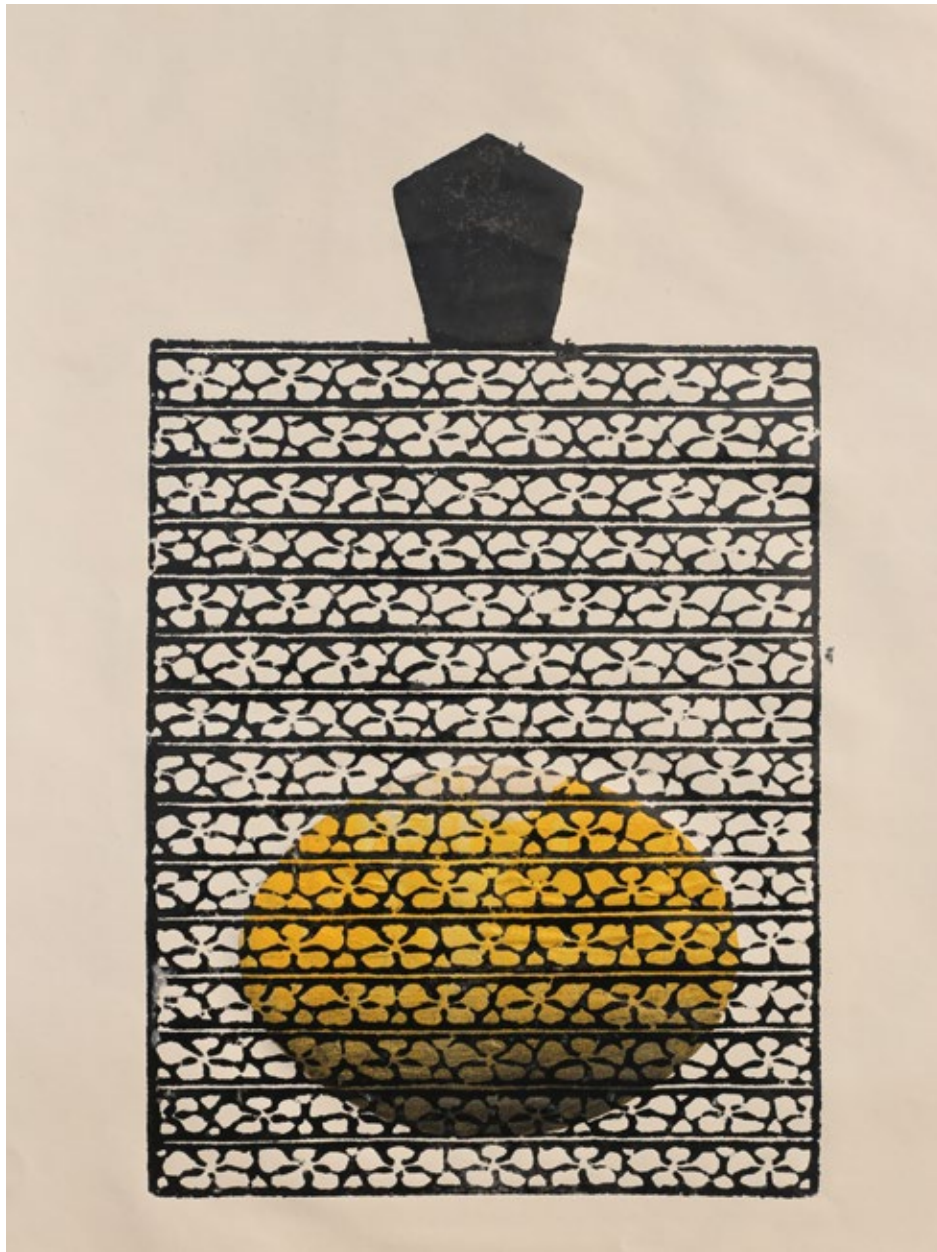
Mirza 2021

*Fasl e Gul, (Season of Flowers), 2021, Woodcut, Image size: 20 ¼ x 33 cm - 8 x 13 in  
Paper size: 35 ½ x 56 cm - 14 x 22 in*

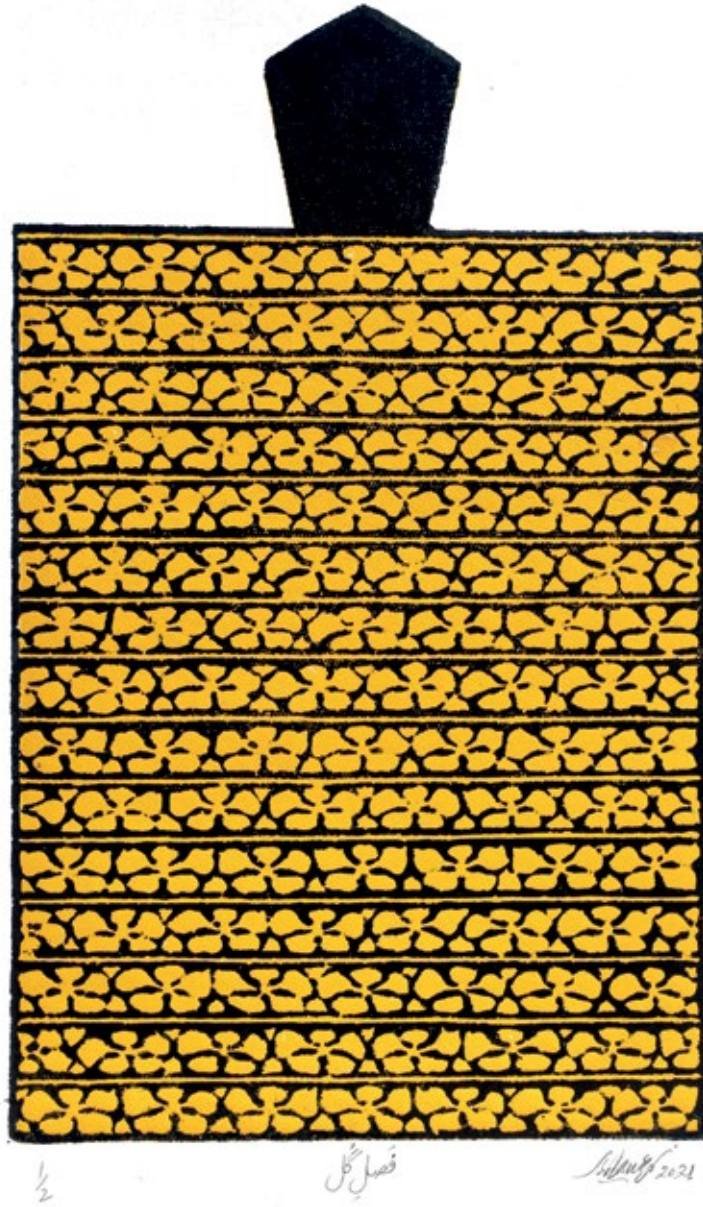




*Fasl e Gul, (Season of Flowers), 2021, Edition length: EV 1/1, 2021, Woodcut with chine collé  
35.5 x 56 cm / 14 x 22 in*



*Fasl e Gul, (Season of Flowers)*, 2021, (EV 1/1), Woodcut with chine collé and graphite on Schoeller Durex paper  
Image size: 20 ¼ x 33 cm - 8 x 13 in, Paper size: 38 x 55 ½ cm - 15 x 22 in



*Fasl e Gul, (Season of Flowers), 2021, Edition length: 1/2, 2021, Woodcut,  
35.5 x 56 cm / 14 x 22 in*





*The Starry Night*, Edition length: VE 6/6, 2021, Linocut with hand coloring in acrylic, 16 x 21 cm / 6.25 x 8.25 in



*The Starry Night*, Edition length: VE 5/6, 2021, Linocut with hand coloring in Lyra metallic & colored pencils, 16 x 21 cm / 6.25 x 8.25 in





*The Starry Night*, Edition length: VE 3/6, 2021, Linocut with hand coloring  
in colored pencils and graphite, 16 x 21 cm / 6.25 x 8.25 in





*The Starry Night* , Edition length: VE 4/6, 2021, Linocut with hand coloring in Lyra metallic & colored pencils  
16 x 21 cm / 6.25 x 8.25 in





*The Starry Night*, 2021, (2/6 VE), Linocut with hand coloring in colored pencils and graphite  
16 x 21 cm – 6 ¼ x 8 ¼ in



*The Starry Night* , Edition length: VE 1/6, 2021, Linocut with hand coloring in acrylic and graphite  
16 x 21 cm / 6.25 x 8.25 in





*The Starry Night* , Edition length: 13/30, 2021, Linocut, 16 x 21 cm / 6.25 x 8.25 in



*Lightning*, 2021, Egg tempera on traditional gesso panel, 14.75 x 31 cm / 5.75 x 12.25 in





*Narcissus Reborn*, 2019, Acrylic and oil on canvas, 60.5 x 72.5 cm / 24 x 28.5 in





*The Silver Umbrella*, 2020, Acrylic on canvas, 27.5 x 27.5 cm / 10.75 x 10.75 in



*The Pink Umbrella* , 2019, Acrylic and oil on canvas, 71 x 55.5 cm / 22 x 28 in



*To the Moon, with longing* (Diptych), 2020, Graphite on paper, 34 x 52 cm / 13.25 x 20.5 in





*The Shared Umbrella*, 2020, Acrylic and graphite on paper, 26.5 x 34.5 cm / 10.5 x 13.5 in



*The Summer Palace*, 2014-2020, Acrylic & gold leaf on paper, 10 in dia





*The River*, 2020  
Acrylic on canvas  
20 x 76 cm / 8 x 30 in



*The Rainbow*, 2020, Acrylic on canvas, 27.5 x 27.5 cm / 11 x 11 in



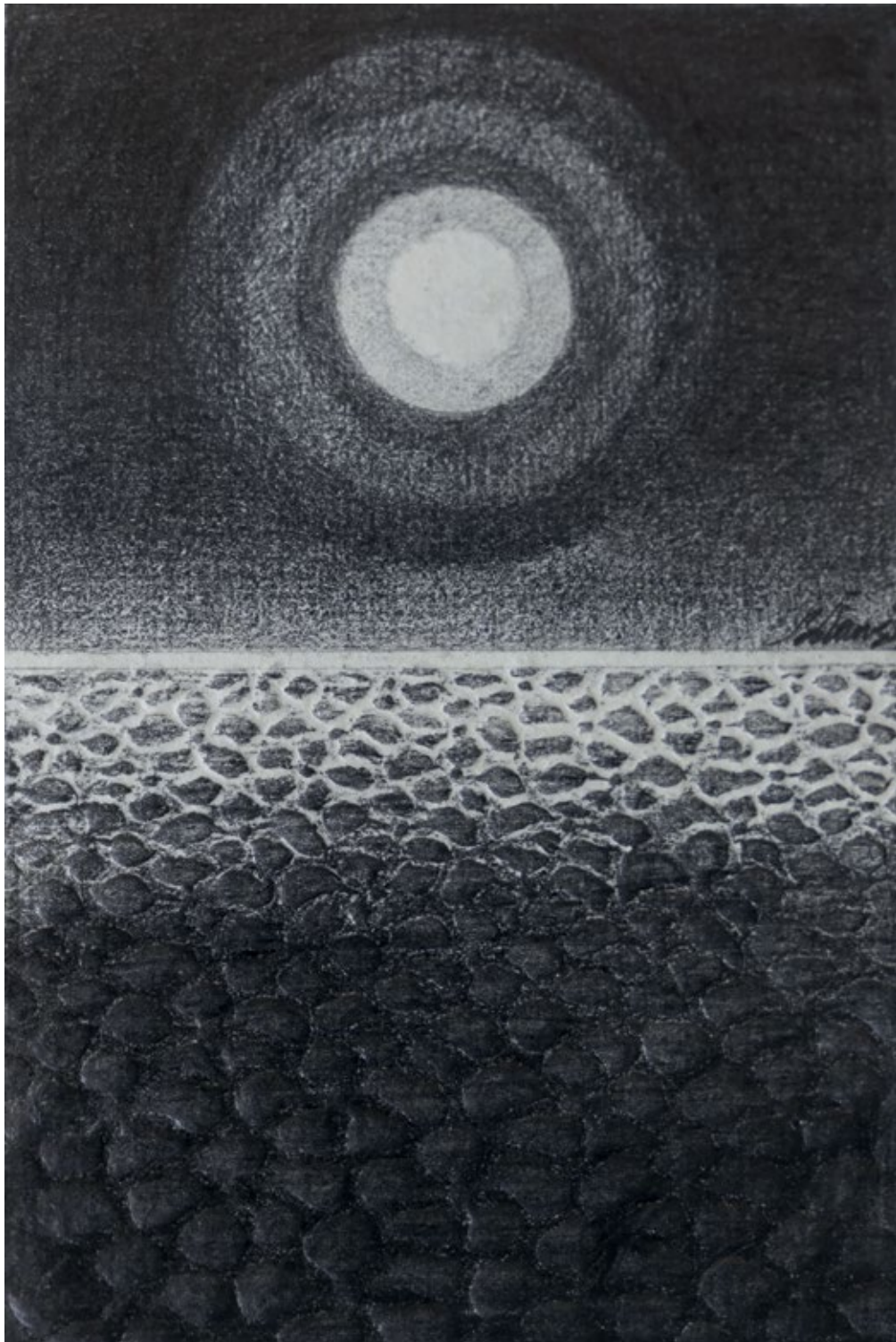


*The Floating Cloud*, 2021, Acrylic on canvas, 23 x 23 cm / 9 x 9 in



*The Whispering Tree*, 2020, Acrylic, conte' & graphite on handmade paperboard, 28 x 35 cm / 11 x 13.75 in





*The Moonrise III*, 2021, Graphite and woodcut embossing on paper on paper, 10 x 15.25 cm / 4 x 6 in



GALLERY